
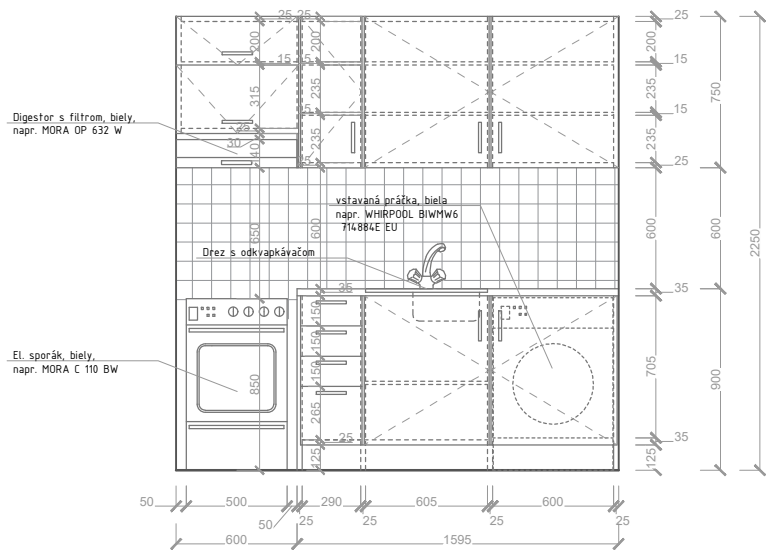
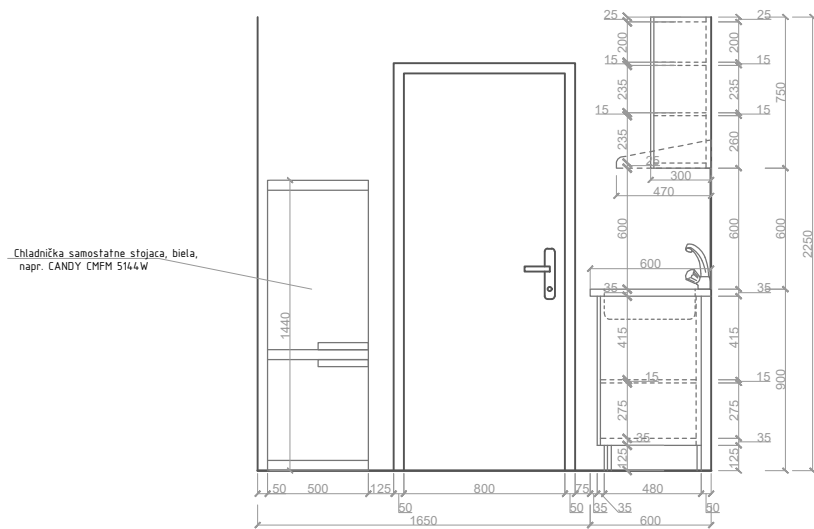


Investor stavby	Mesto Púchov, Štefánikova 821/21, 020 18, Púchov	<div> <div> <div>•••••</div> <div>STU</div> </div> <div> <div>•••••</div> <div>FA</div> </div> </div> <div> SLOVENSKÁ TECHNICKÁ UNIVERZITA V BRATISLAVE FAKULTA ARCHITEKTÚRY </div>	
Adresa stavby	k.ú. Horné Kočkovce, C KN 1759, 1518/1-4, 1522/1-4		
Zodp. projektant	doc. Ing. arch. Ľubica Viťková, PhD.		
Zodp. projektant príslušnej časti PD:	doc. Ing. arch. Ľubica Viťková, PhD.		
Autor riešenia	Ing.arch. Ivan Siláči, PhD.	Stupeň PD	SP
Vypracoval	Ing.arch. Ivan Siláči, PhD.	Dátum	09/2019
Predmet	Prestavba a stavebné úpravy objektov A a B na Kolonke so zmenou účelu užívania na bytové domy	Profesia	Architektúra
		Formát	5 A4
		Mierka	1:50
Obsah výkresu	Objekt B_Špecifikácia kuchynských liniek v objekte	Výkres	

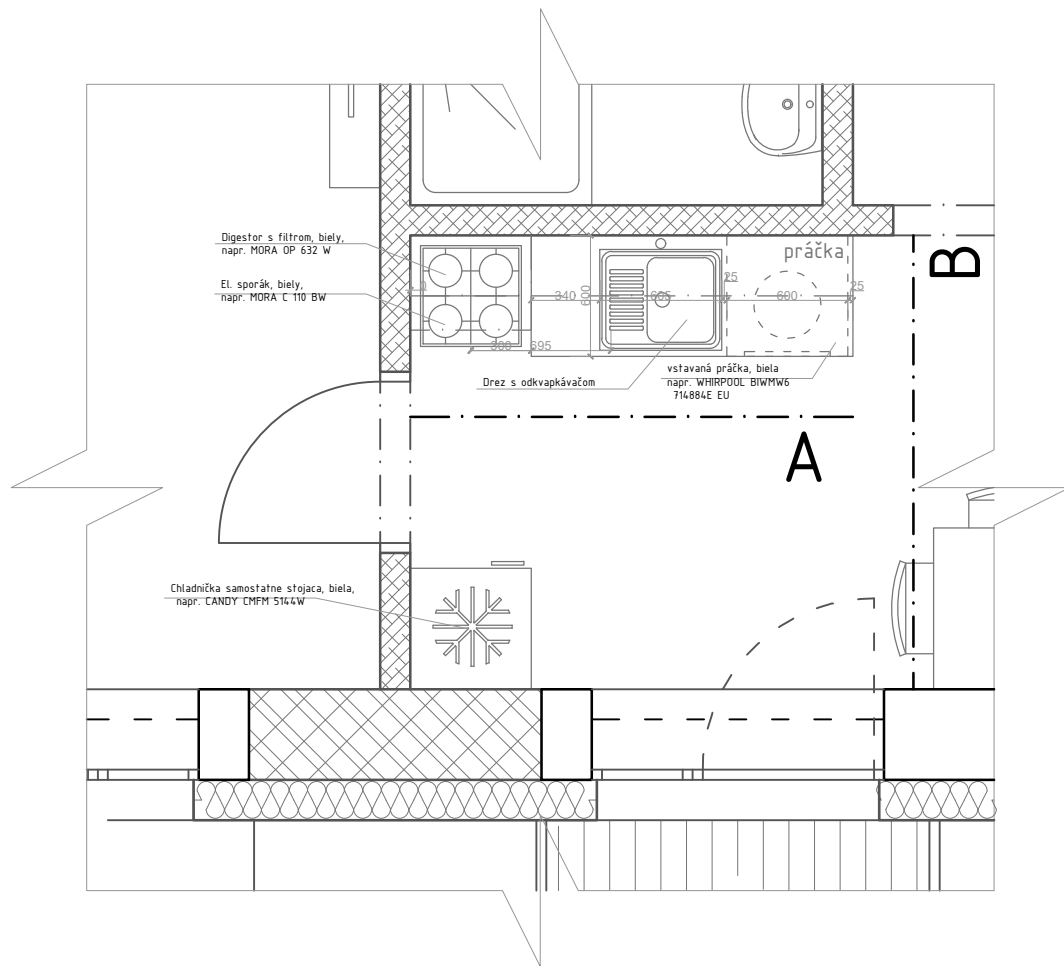
Kuchynská linka
K1
pohl'ad A



Kuchynská linka
K1
pohl'ad B

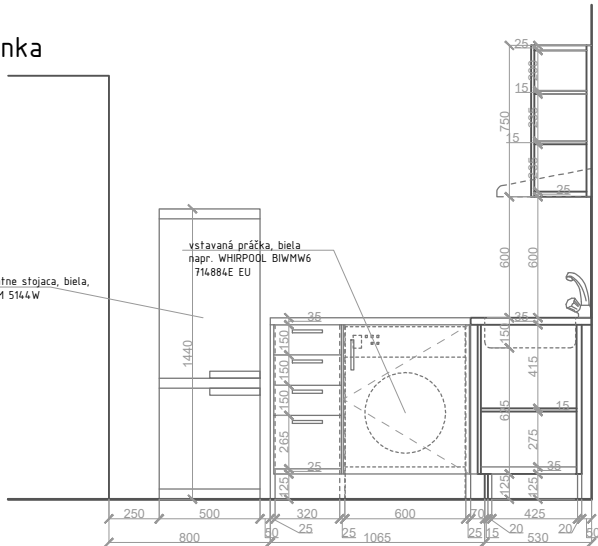


Kuchynská linka
K1
pôdorys

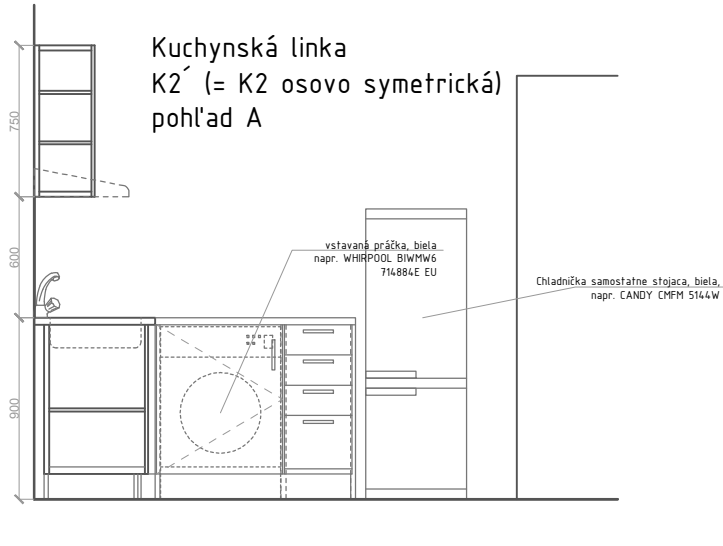


Kuchynská linka
K1 spolu 3x v objekte

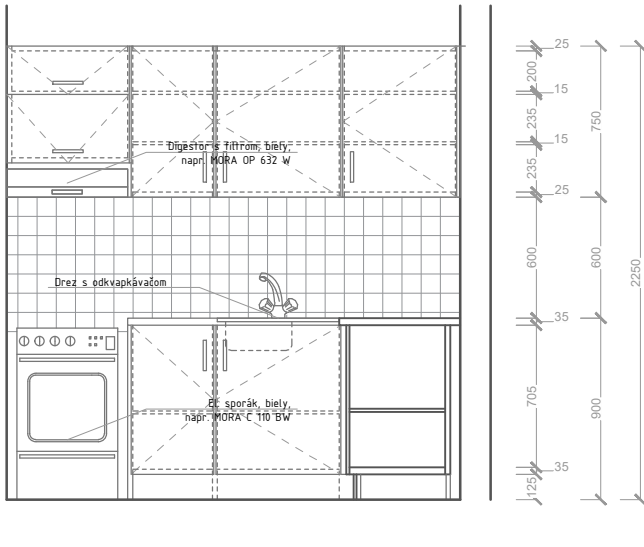
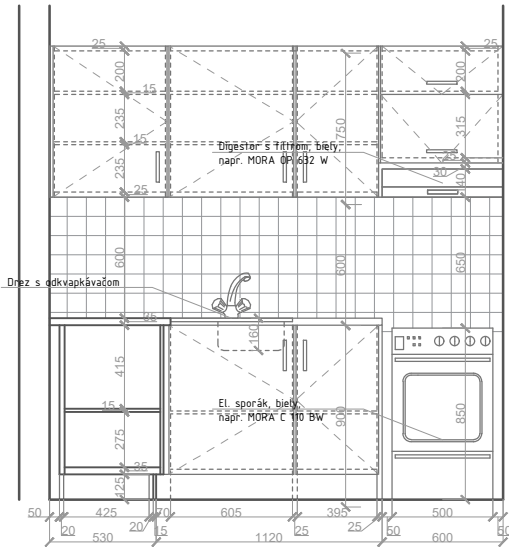
Kuchynská linka
K2
pohl'ad A



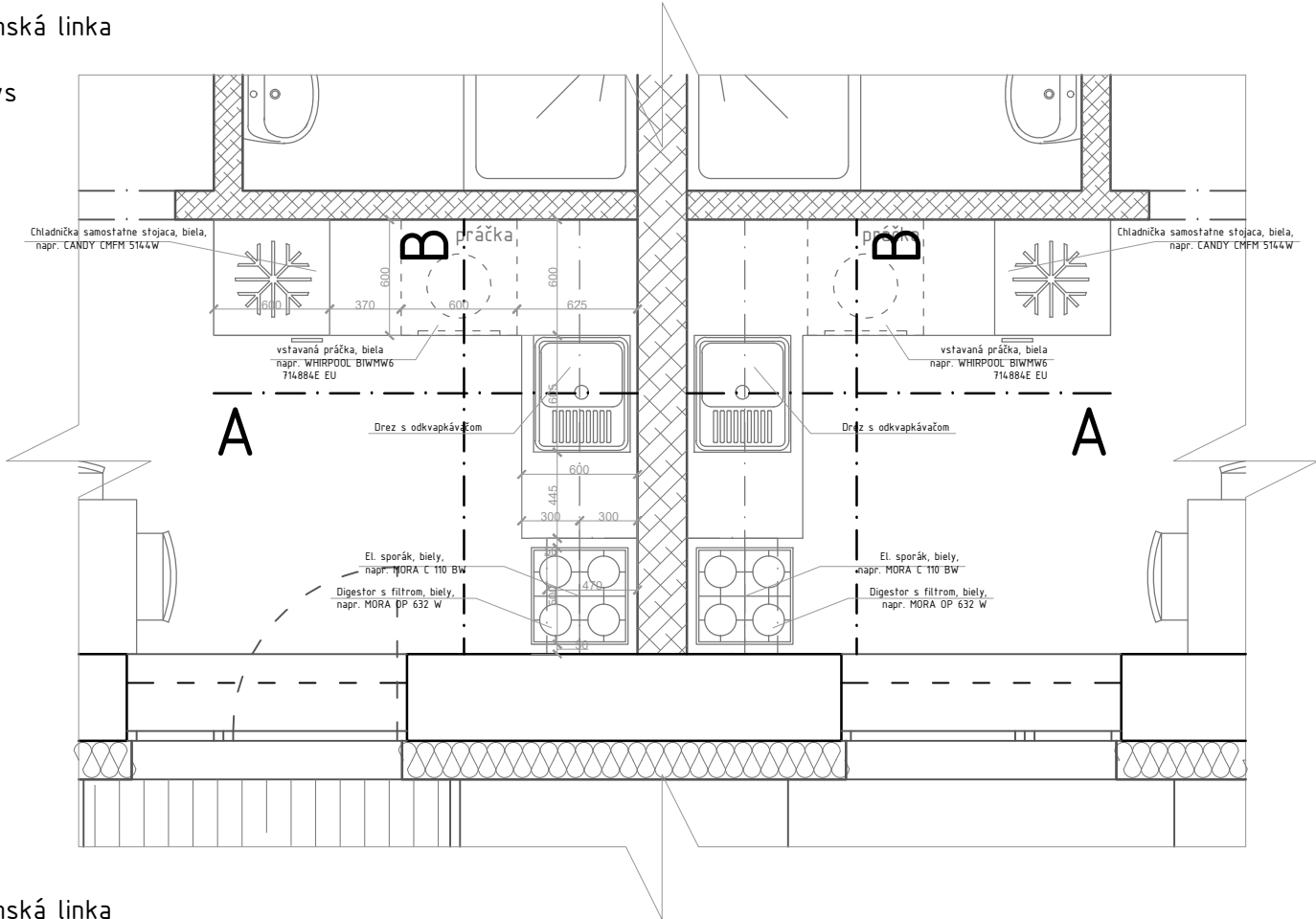
Kuchynská linka
K2' (= K2 osovo symetrická)
pohl'ad A



Kuchynská linka
K2
pohl'ad B

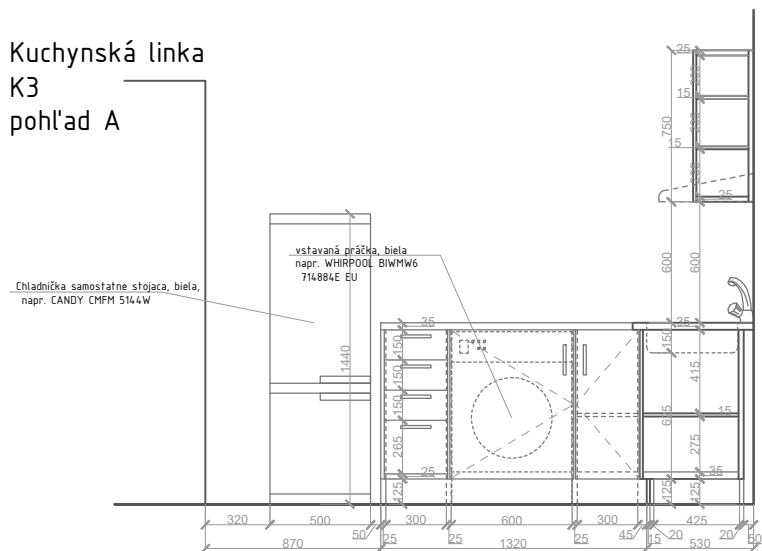


Kuchynská linka
K2
pôdorys

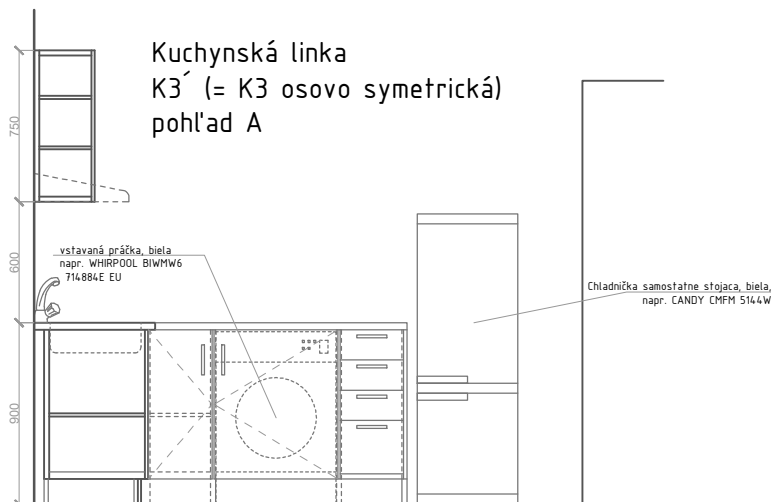


Kuchynská linka
K2 spolu 3x v objekte , K2' spolu 3x v objekte

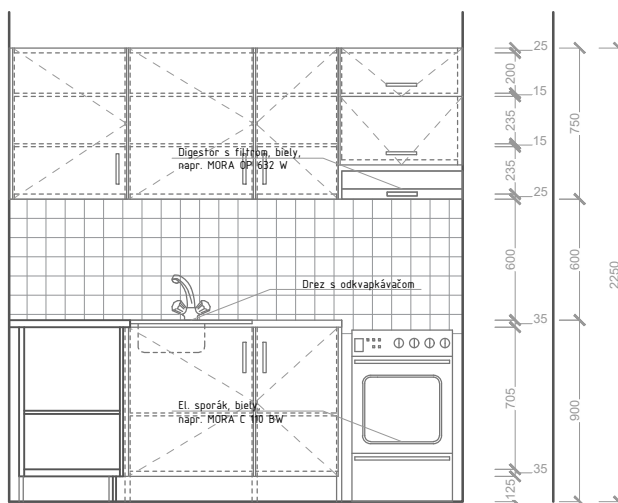
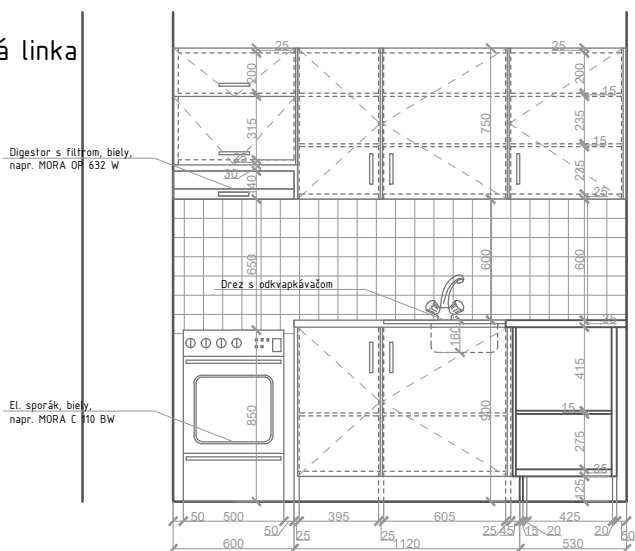
Kuchynská linka
K3
pohľad A



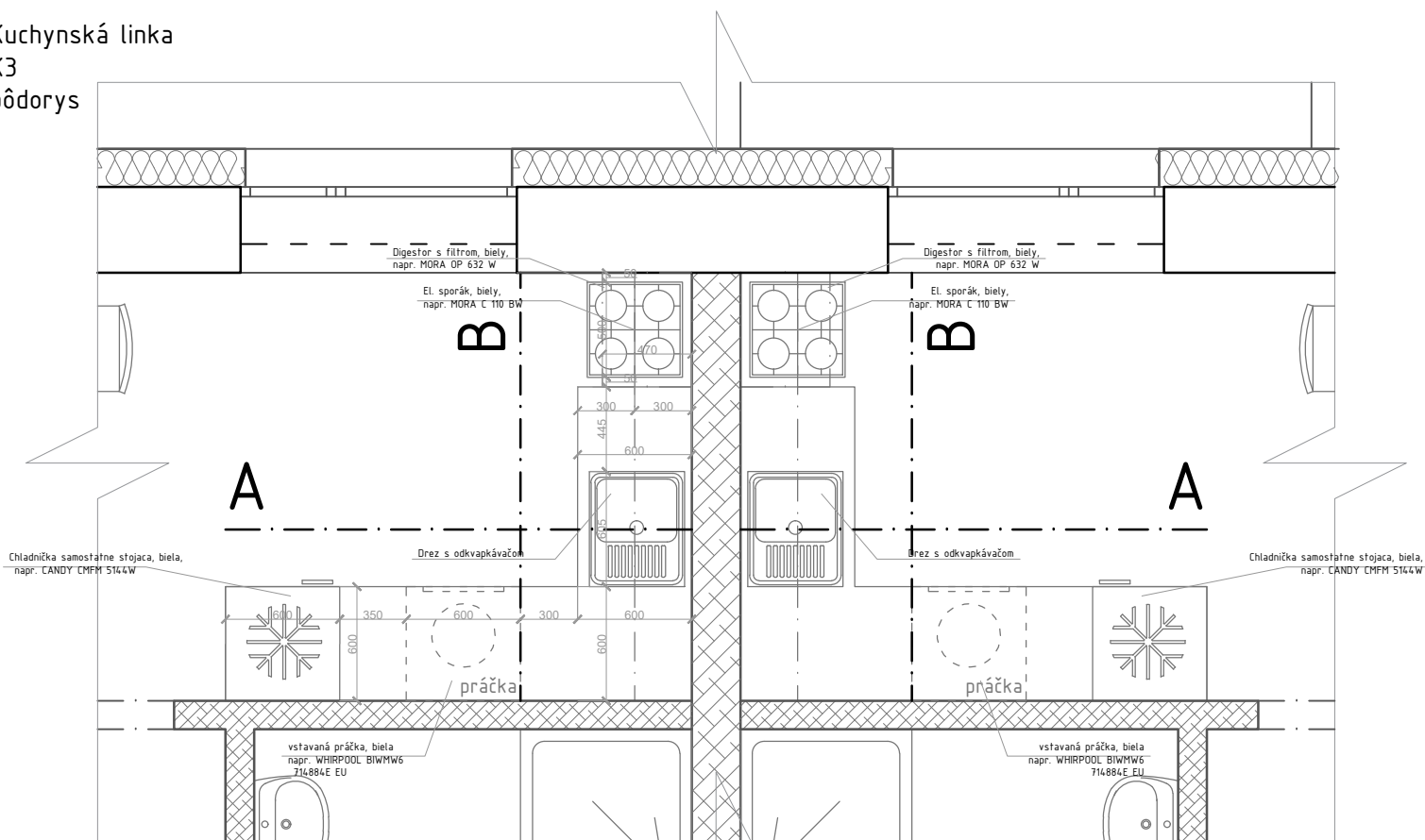
Kuchynská linka
K3' (= K3 osovo symetrická)
pohľad A



Kuchynská linka
K3
pohľad B

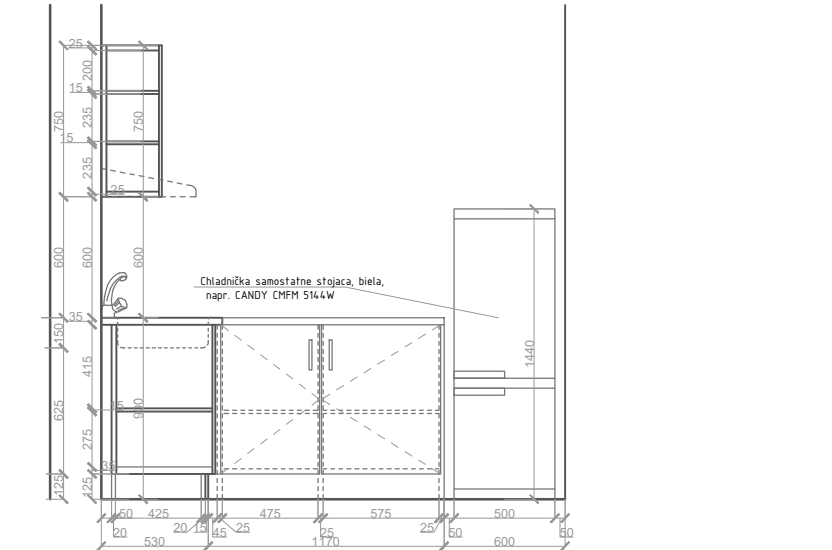


Kuchynská linka
K3
pôdorys

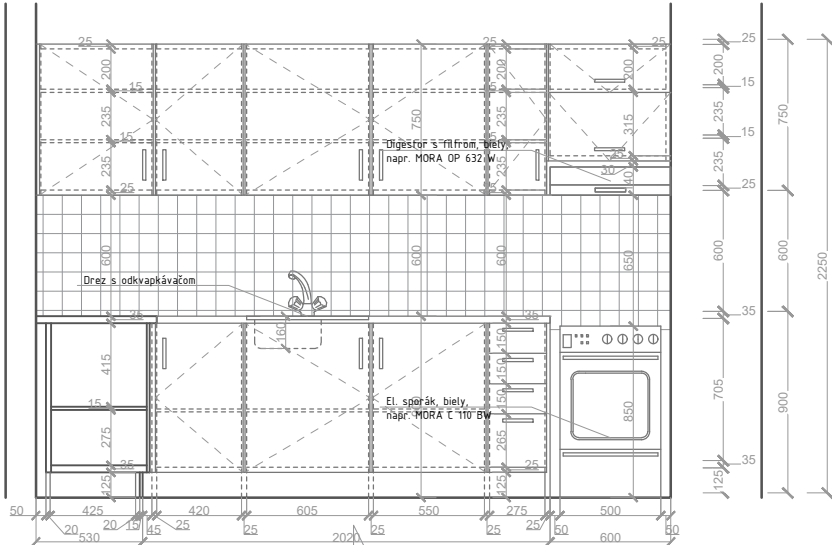


Kuchynská linka
K3 spolu 3x v objekte , K3' spolu 3x v objekte

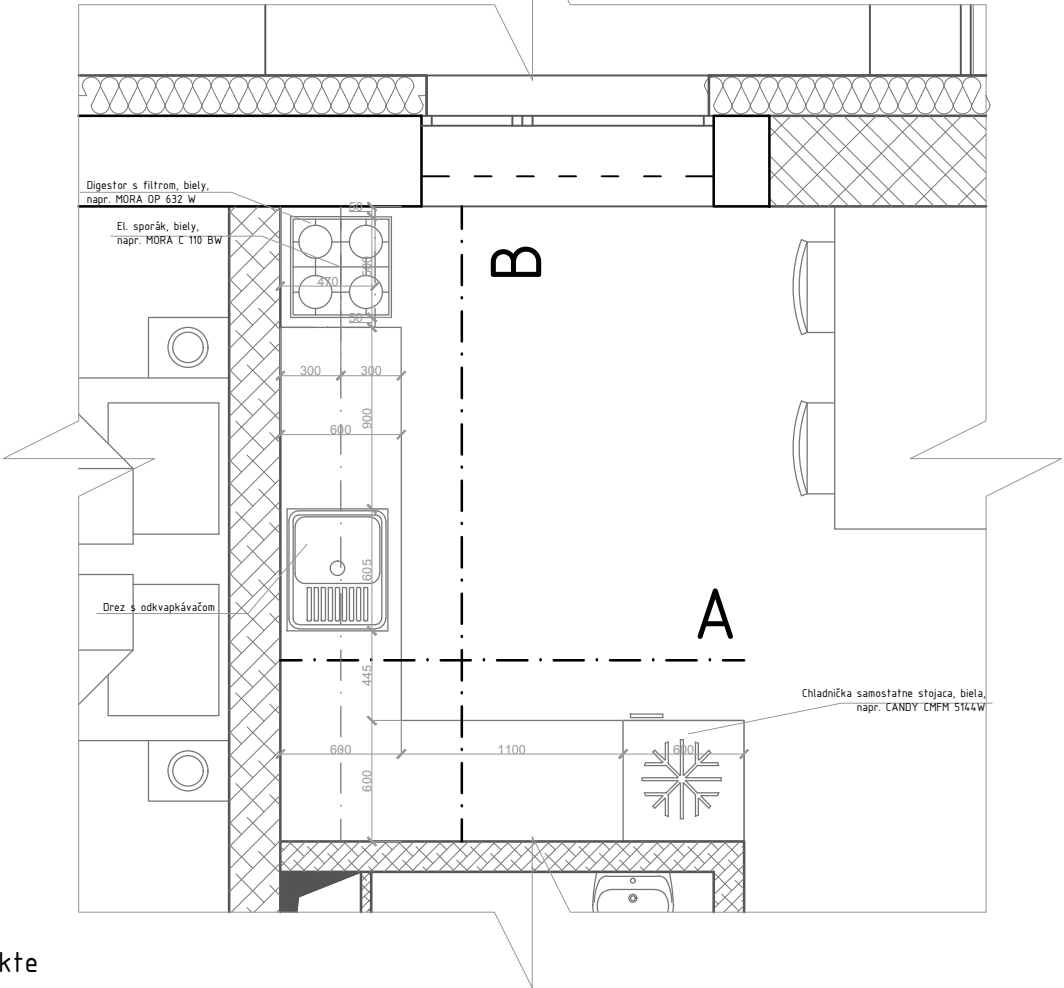
Kuchynská linka
K4
pohl'ad A



Kuchynská linka
K4
pohl'ad B



Kuchynská linka
K4
pôdorys



Kuchynská linka
K4 spolu 3x v objekte